

HAZEL SITE PROGRESS PHOTOS

FEBRUARY 28, 2019



HAZEL PROJECT VIEW FROM ROAD



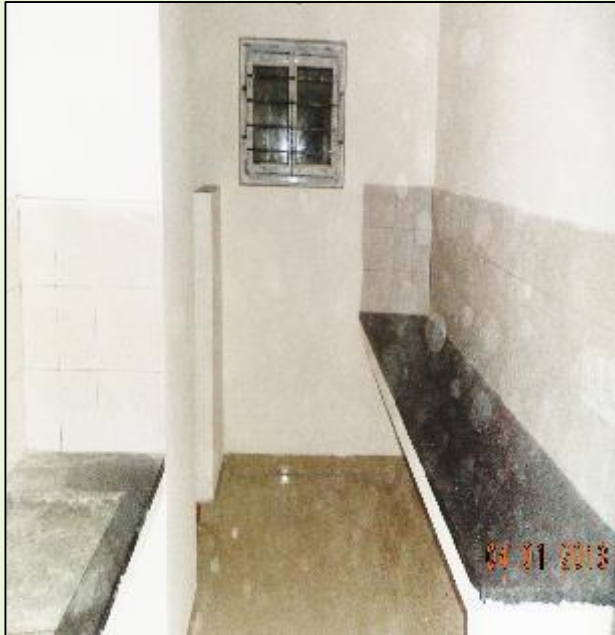
BLOCK "E"

WORKS IN PROGRESS:

- ❖ External Painting for West side, East side, North side and South side completed.
- ❖ Toilet wall Tado & flooring tile completed.
- ❖ Door shutter painting completed and main door polish completed
- ❖ UPVC window fixing completed and window grill fixing completed
- ❖ Electrical wiring, toilet suspended line, shaft vertical line completed, and terrace plumbing ring main water line completed
- ❖ Kitchen Granite completed.
- ❖ Toilet false ceiling completed
- ❖ Customer Inspection on-going



BLOCK 'E' – Finishing flats



BLOCK 'E' ENTRY @ STILT FLOOR



BLOCK 'E' STILT FLOOR



BLOCK 'E' – EAST ,WEST & NORTH ELEVATIONS

