

HAZEL

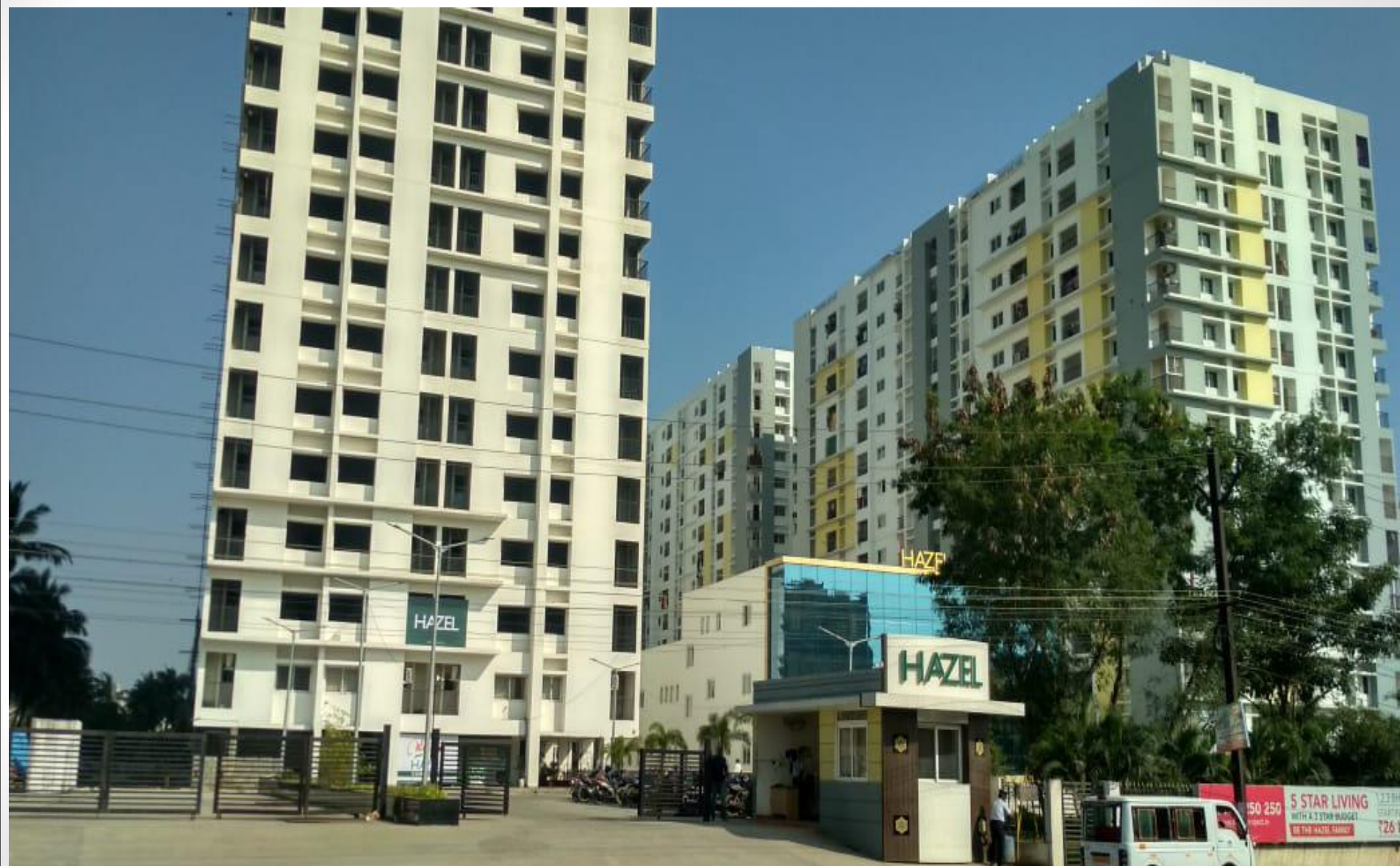
Avadi - Poonamalle High Road



HAZEL PROJECT VIEW FROM MAIN ROAD



ENTRANCE FRONT VIEW



BLOCK 'B' - NORTH ELEVATION



BLOCK 'E' - NORTH & WEST ELEVATIONS



BLOCK 'E' BASEMENT CAR PARK



BLOCK 'E' - FLAT VIEW



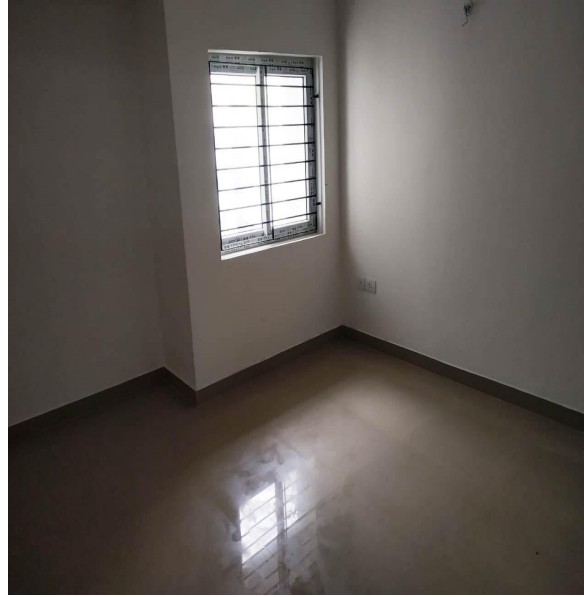
BLOCK 'E' - HANDING OVER WORK



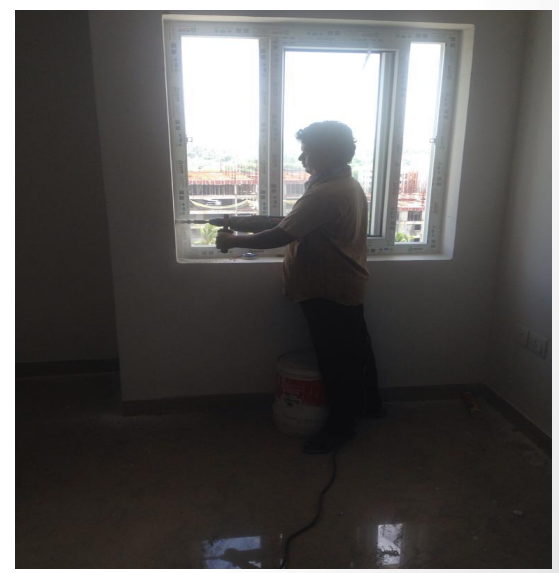
BLOCK 'C' - ELEVATION



BLOCK 'C' - FLAT VIEW



BLOCK 'C' -HANDING OVER WORK



BLOCK “D”



BLOCK 'D' - WORKS IN PROGRESS



BLOCK 'F' - ELEVATIONS

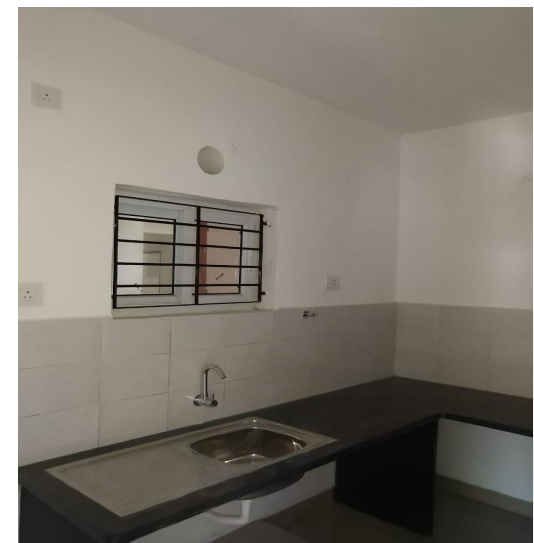
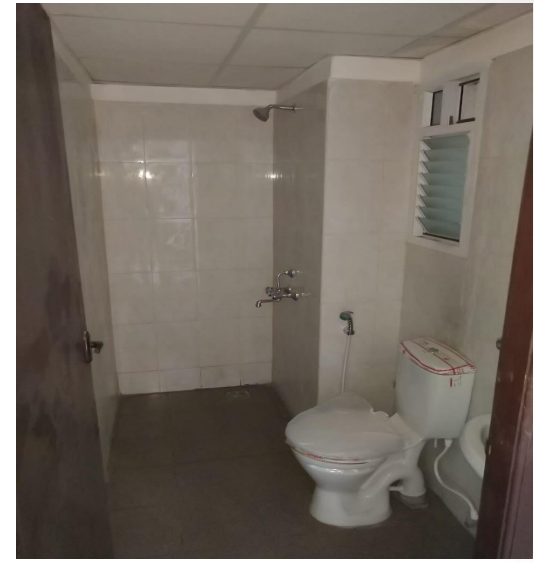
NORTH SIDE



SOUTH & WEST SIDE



BLOCK 'F' - FLAT VIEW



1.5 / 1 BHK: 570 & 578 sq. ft.

BLOCK 'F' - HANDING OVER WORK



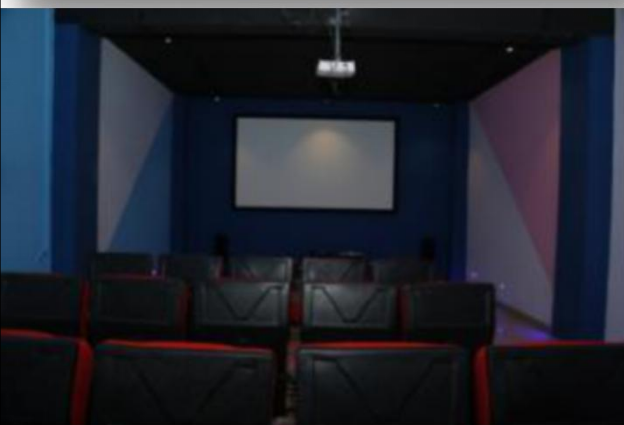
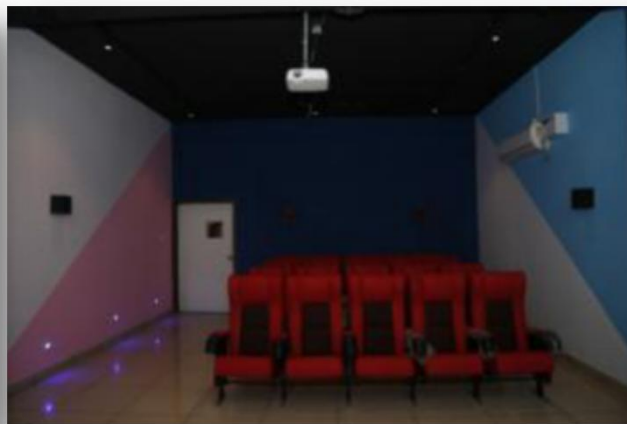
CLUB- HOUSE FRONT ELEVATION



CLUB HOUSE



CLUB HOUSE-GYM,AV ROOM,MULTI PURPOSE HALL



EXTERNAL WORKS - ROAD WORKS/DRAIN WORKS/FIRE HYDRANT



750 KVA TRANSFORMER YARD



LANDSCAPE

